

Licel Ethernet Controller – Debugging the network setup

Licel GmbH

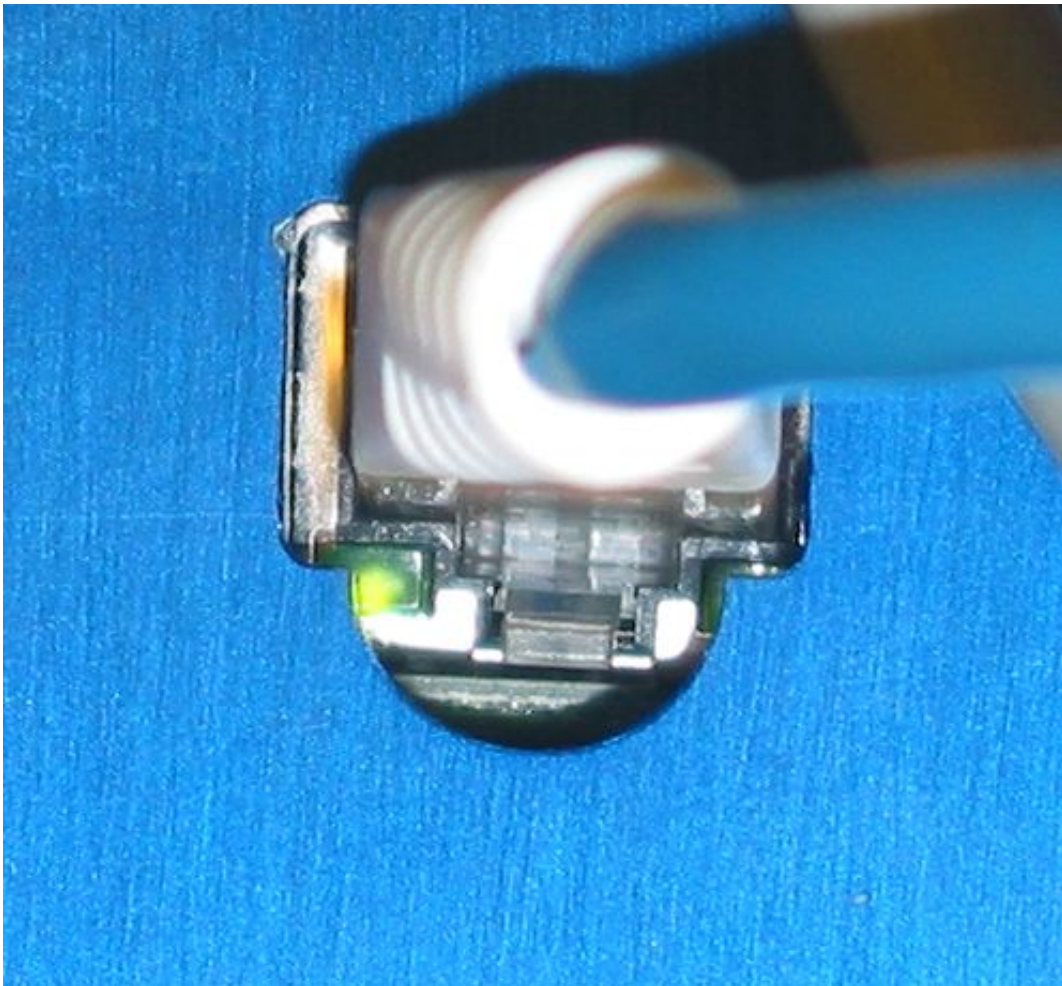
August 26, 2009

Chapter 1

Diagnostics

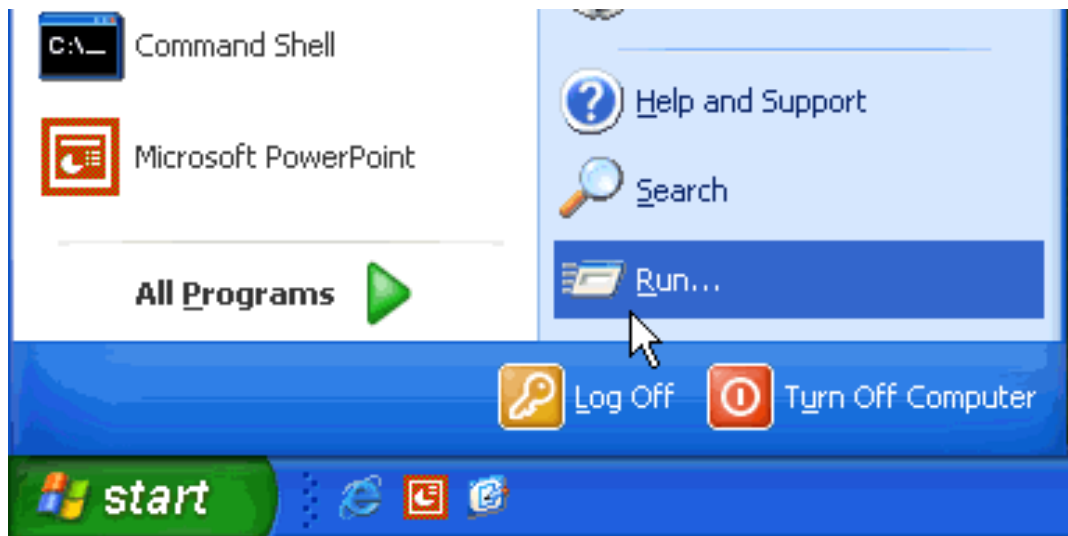
Please carry out the following steps to verify that the connection of the Licel Ethernet Controller with the PC is established.

1. Verify that the green **LNK** LED lights up indicating a correct electrical connection.
2. Verify that in case of a 100Mbit ethernet connection the **Spd** lights up.
3. The LED at the spectrometer should look like this:

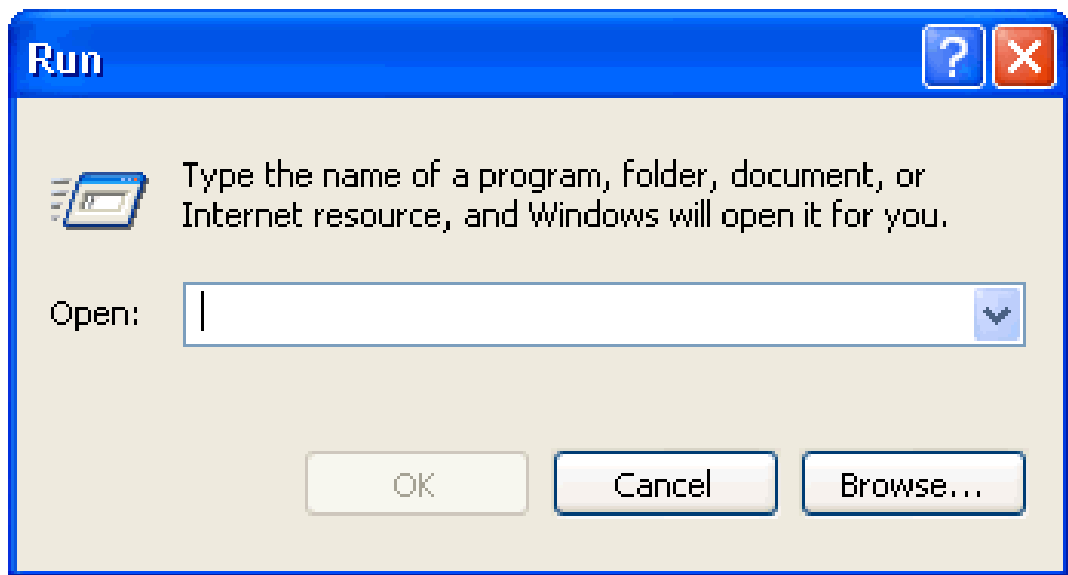


4. Please disable any firewall that might be running on your PC.
5. Verify that the network settings of your PC have changed according to your settings:

- (a) Open a command prompt window (DOS box).
- Select from the Windows menu `Run...`



- A new window will open,



type there `cmd` and press `Enter`.

- (b) Type in the then opening window `ipconfig` and press enter. At least one of the ethernet adapters should show the address that you previously set (192.168.69.100). The response should be similar to the following:

```
1 Ethernet Adapter :
    IP-Address. . . . . : 192.168.69.100
    Subnet Mask . . . . . : 255.255.255.0
    Standard-Gateway. . . . . :
```

- (c) The screen should look like.

```

C:\WINDOWS\system32\cmd.exe
Microsoft Windows XP [Version 5.1.2600]
(C) Copyright 1985-2001 Microsoft Corp.

C:\Dokumente und Einstellungen\Bernd>ipconfig

Windows-IP-Konfiguration

Ethernetadapter LAN-Verbindung:

    Verbindungsspezifisches DNS-Suffix:
    IP-Adresse. . . . . : 192.168.69.59
    Subnetzmaske. . . . . : 255.255.255.0
    Standardgateway . . . . . : 192.168.69.253

Ethernetadapter LAN-Verbindung 4:

    Medienstatus. . . . . : Es besteht keine Verbindung

C:\Dokumente und Einstellungen\Bernd>

```

Please make a screenshot of the window and mail it to Licel. If you are uncertain how to do a screenshot take a digital camera and photograph the screen.

6. Verify that the Licel Ethernet Controller is accessible via the network now:
 - (a) Open a new command prompt window (DOS box) or use the one from above.
 - (b) Type `ping 192.168.69.152` and press enter. The Licel Ethernet Controller should respond without loss of any packet.
 - (c) The response should look like the following:

```

C:\WINDOWS\system32\cmd.exe
Microsoft Windows XP [Version 5.1.2600]
(C) Copyright 1985-2001 Microsoft Corp.

C:\Dokumente und Einstellungen\Bernd>ping 192.168.69.152

Ping wird ausgeführt für 192.168.69.152 mit 32 Bytes Daten:

Antwort von 192.168.69.152: Bytes=32 Zeit=969ms TTL=60
Antwort von 192.168.69.152: Bytes=32 Zeit<1ms TTL=60
Antwort von 192.168.69.152: Bytes=32 Zeit<1ms TTL=60
Antwort von 192.168.69.152: Bytes=32 Zeit<1ms TTL=60

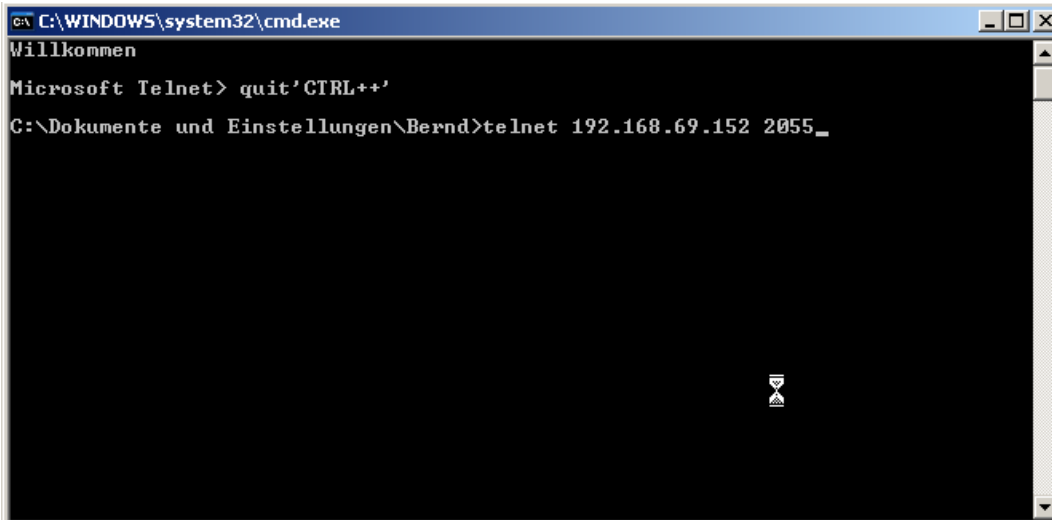
Ping-Statistik für 192.168.69.152:
    Pakete: Gesendet = 4, Empfangen = 4, Verloren = 0 (0% Verlust),
    Ca. Zeitangaben in Millisek.:
        Minimum = 0ms, Maximum = 969ms, Mittelwert = 242ms

C:\Dokumente und Einstellungen\Bernd>_

```

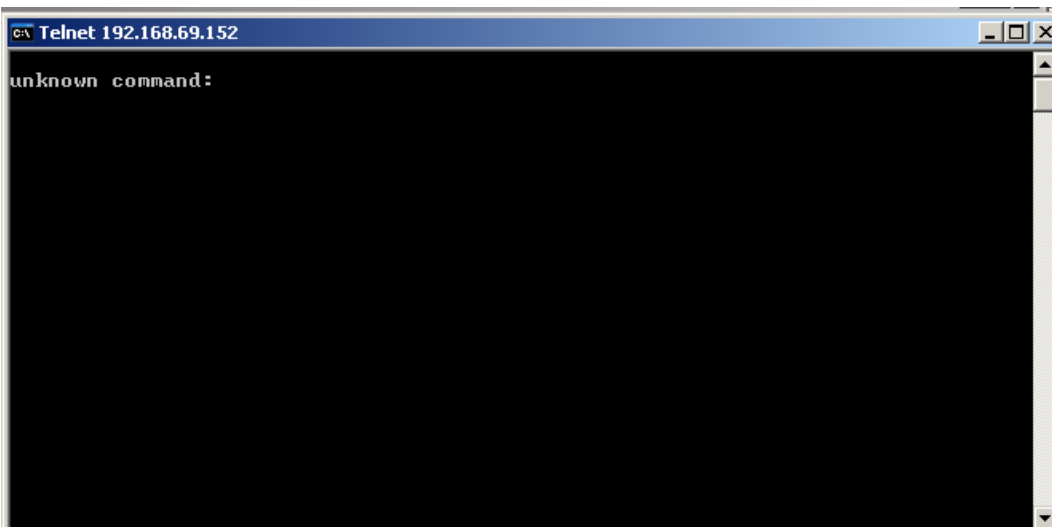
Please make a screenshot of the window and mail it to Licel.

7. If the previous step had all packets transmitted Open a new command prompt window (DOS box) or use the one from above and type `telnet 192.168.69.152 2055` and press Enter.



```
C:\WINDOWS\system32\cmd.exe
Willkommen
Microsoft Telnet> quit'CTRL++'
C:\Dokumente und Einstellungen\Bernd>telnet 192.168.69.152 2055_
```

The window should go blank. Just hit enter there the screen should look the following



```
Telnet 192.168.69.152
unknown command:
```

Please mail also this screenshot to us.

To close this box hit `CTRL` and the `+ Sign.` and then enter `quit`.