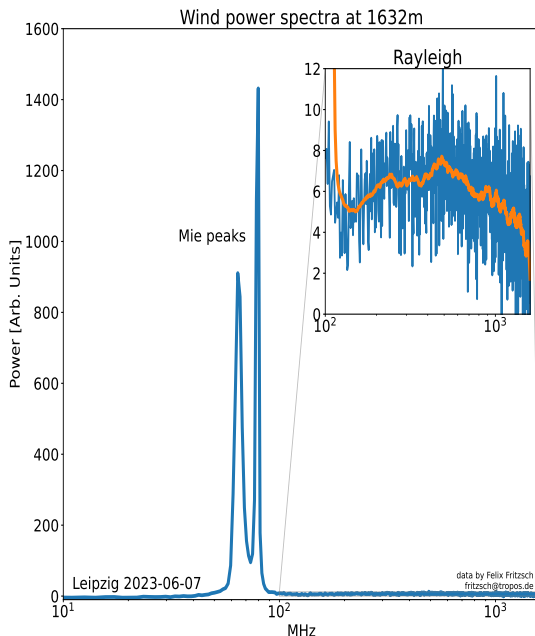


Combined Mie Rayleigh Windprofiles



- The Licel Waverider™ 3.2 is a powerful data acquisition and data processing system for combined Mie Rayleigh wind profiles.
- It is based on a high speed and wide dynamic range A/D converter together with a hardware accelerated FFT processor in a FPGA.
- FFTs are averaged for a user defined number of shots.
- This hardware outperforms PC based post-processing solutions and acquires your wind lidar signals at a duty cycle >95% with up to 6 Mio FFTs/second and a 1024 frequency averaged output.
- It comes with open LabVIEW and C-sources to read the data from the instrument and gives full access to the raw spectral data

Features:

- 12-bit ADC/3.2Gs/s
- >95% duty cycle
- hardware accelerated FFTs with full averaged frequency spectrum output for each range bin
- Trigger input (slave mode)
- LabVIEW and C sources



Licel GmbH
Gustav-Meyer-Allee 25
D-13355 Berlin
Germany

phone +49 30 28391737
fax +49 30 28391737
email info@licel.com
www.licel.com

International distribution:

Asian Pacific Rim:
Electronics Optics Res., Ltd.
3-fl., Onoda Building,
4-26-19, Koenzi-Minami-Ku
Tokyo 166, Japan
phone 03-3314-5699
fax 03-3314-2333
email: takishima@eor.jp
www.eor.jp

USA:
Boston Electronics Corp.
91 Boylson Street
Brookline MA 02445
USA
phone (800) 347-5445
fax (617) 731-0935
e-mail: jjd@boselec.com
www.boselec.com

India:
Digilog Technologies Pvt. Ltd.
3/1 Royale Palm Residency
Palmgrove Road Victoria Layout
Bangalore 560047 Karnataka India
phone +91 80 25575500
fax +91 80 41126664
email: digilogsys@gmail.com
www.digilogsys.in

United Kingdom:
Photonic Solutions Ltd.
Unit 2.2 Quantum Court Heriot
Watt University Research Park
Currie EH14 4AP
phone 0131 664 8122
fax 0131 664 8144
email: sales@psplc.com
www.psplc.com